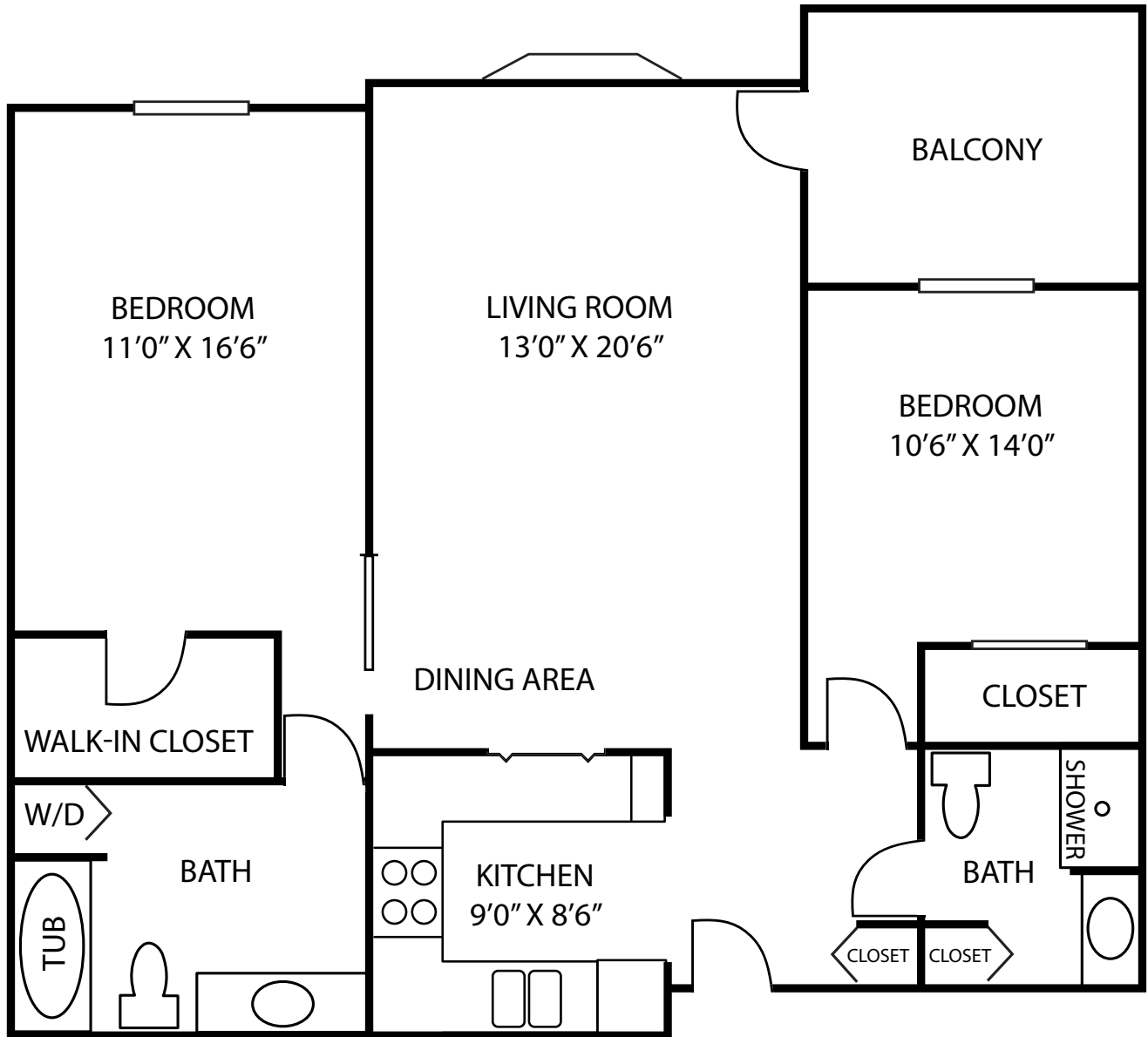




INDEPENDENT LIVING

Floor Plan

Wilshire



Wilshire

- Park Terrace
- Two Bedrooms
- 1,000 square feet

2023 (P2BA)



LUTHER MANOR
A Life Plan Community

Wauwatosa
414.464.3880 | live@luthermanor.org | luthermanor.org



Wilshire - Park Terrace Two Bedrooms

Entrance Options	Entrance Fee	Monthly Fee One Person	Monthly Fee Two People
90% Refundable Entrance Fee	\$170,777	\$2,499-2,624	\$3,003-3,128
Declining Balance Entrance Fee	\$96,910	\$2,499-2,624	\$3,003-3,128
Rental		\$3,137-3,294	\$3,641-3,798

The Entrance Fee includes priority access to the full continuum of care at Luther Manor.

Amenities

Included with monthly fees are:

- \$264 dining credit per resident
- All utilities including basic cable (excludes phone & internet)
- Wide range of Life Enrichment activities
- Outdoor parking

Indoor parking is available for an additional fee.

For apartments with a fountain view, golf course view, gazebo view, or proximity to dining, add 5%.
The charge for a second person is \$504 per month along with an additional \$10,000 entrance fee.

Notes:
