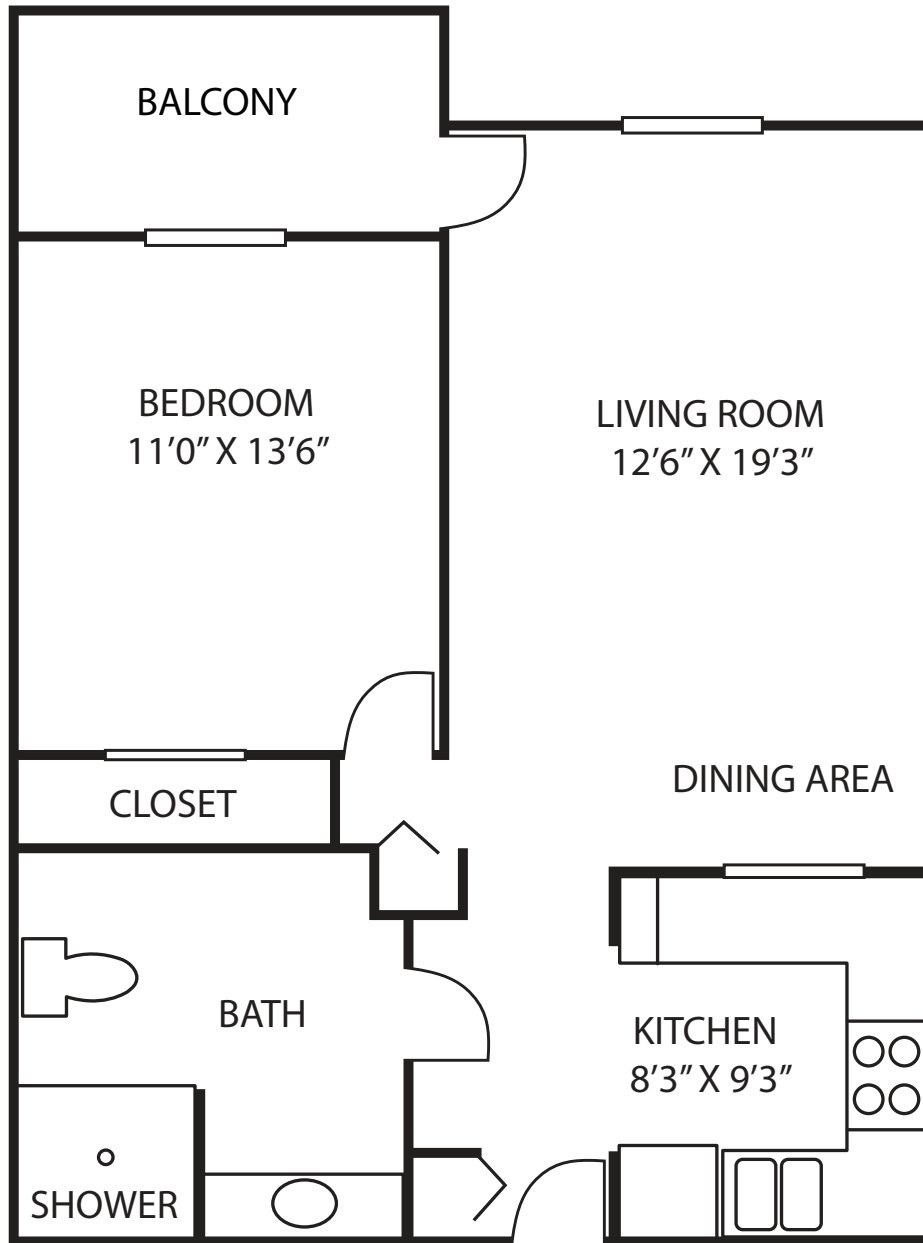




INDEPENDENT LIVING

Floor Plan

Hampton



Hampton

- Park Terrace
- One Bedroom
- 700 square feet

2019 



LUTHER MANOR
A Life Plan Community

Wauwatosa and Mequon
414.464.3880 | live@luthermanor.org | luthermanor.org



Hampton - Park Terrace One Bedroom

	Entrance Fee	Monthly Fee One Person	Monthly Fee Two People
90% Refundable Entrance Fee	\$119,000	\$2,081	\$2,521
Non-Refundable Entrance Fee	\$44,000	\$2,081	\$2,521
Without Entrance Fee		\$2,885	\$3,325

The Entrance Fee includes priority access to the full continuum of care at Luther Manor.

Amenities

Included with monthly fees are:

- \$234 dining credit per resident
- All utilities including basic cable (excludes phone)
- Wide range of Life Enrichment activities
- Outdoor parking

Indoor parking is available for an additional fee.

For apartments with a fountain view, add 10%. For apartments with golf course view, gazebo view, or proximity to dining, add 5%.

The additional charge for a second person is \$440 per month.

Notes:
