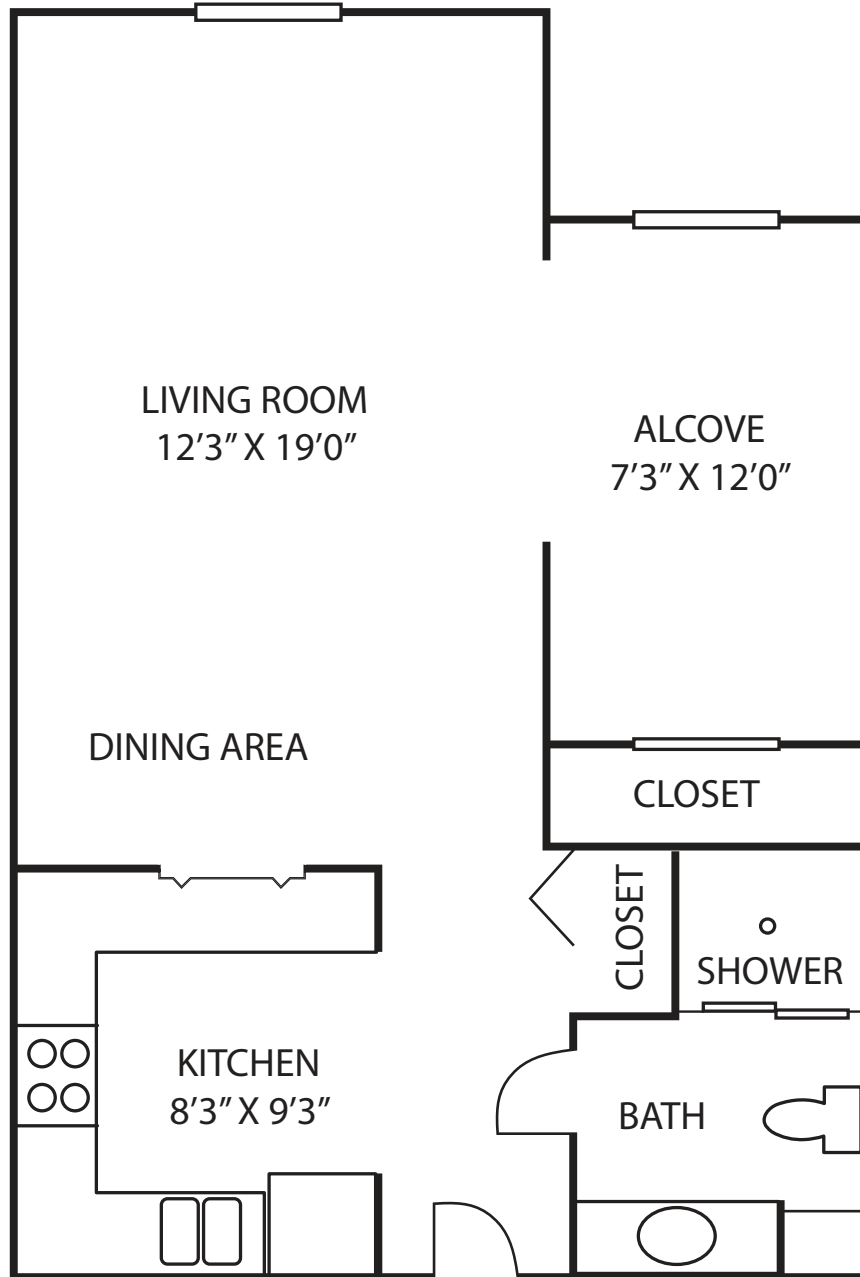




# INDEPENDENT LIVING

Floor Plan

*Evanston*



## Evanston

- Park Terrace
- Studio
- 550 square feet

2019 PS



**LUTHER MANOR**  
A Life Plan Community

Wauwatosa and Mequon  
414.464.3880 | live@luthermanor.org | luthermanor.org



## Evanston - Park Terrace Studio

	Entrance Fee	Monthly Fee One Person
90% Refundable Entrance Fee	\$84,000	\$1,395
Non-Refundable Entrance Fee	\$34,000	\$1,395
Without Entrance Fee		\$1,981

*The Entrance Fee includes priority access to the full continuum of care at Luther Manor.*

## Amenities

Included with monthly fees are:

- \$234 dining credit per resident
- All utilities including basic cable (excludes phone)
- Wide range of Life Enrichment activities
- Outdoor parking

Indoor parking is available for an additional fee.

For apartments with a fountain view, add 10%. For apartments with golf course view, gazebo view, or proximity to dining, add 5%.

The additional charge for a second person is \$440 per month.

## Notes:

---



---



---



---



---

