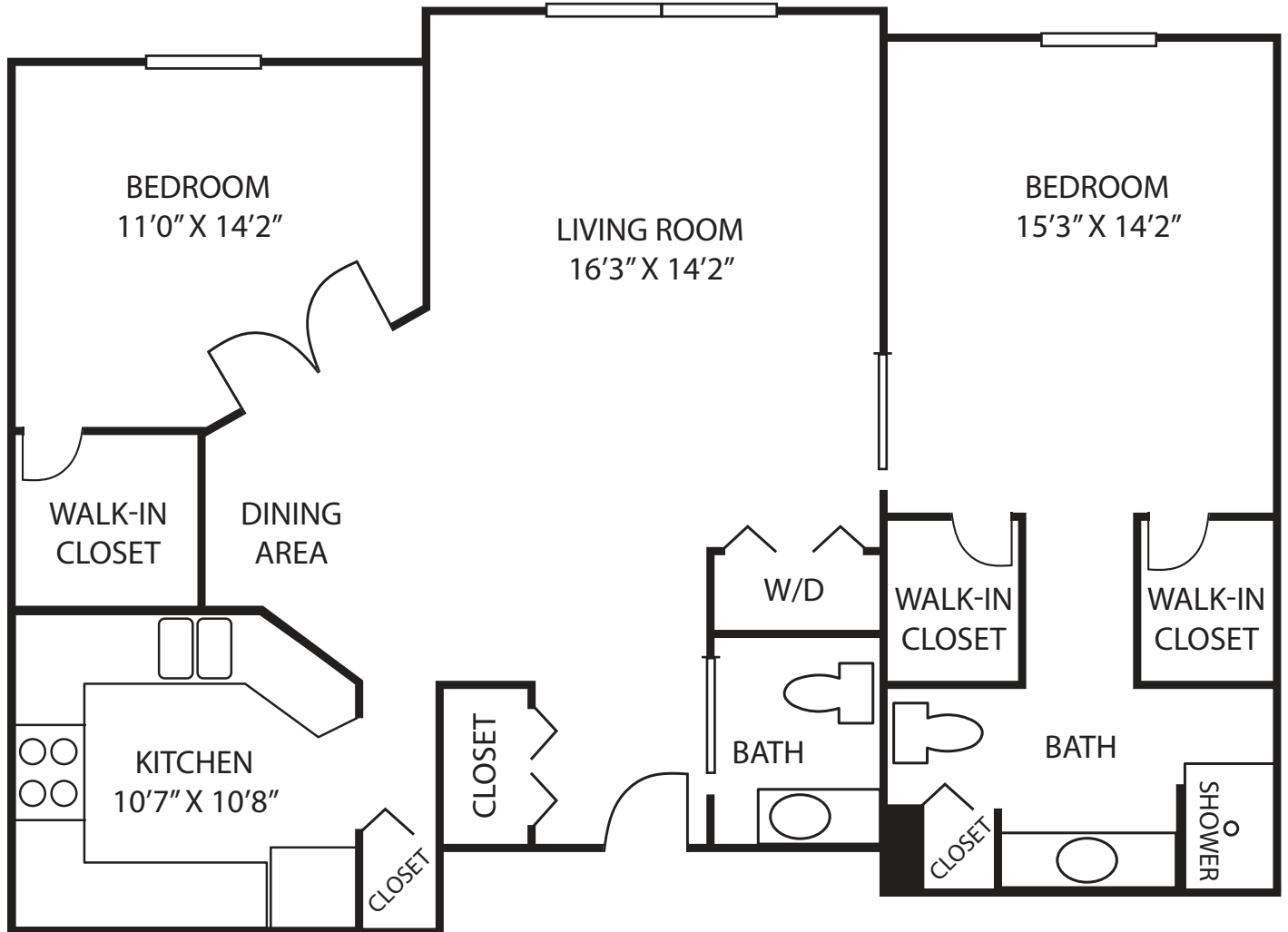




INDEPENDENT LIVING

Terrace Floor Plan

Woodfield



Woodfield

- Garden Terrace
- Two Bedrooms
- 1,110 square feet

2018 2SS



LUTHER MANOR
A Life Plan Community

Wauwatosa and Mequon
414.464.3880 | live@luthermanor.org | luthermanor.org



Woodfield - Garden Terrace Two Bedrooms

	Founder's Fee	Monthly Fee One Person*	Monthly Fee Two People*
90% Refundable Founder's Fee	\$160,900	\$2,727	\$3,160
Non-Refundable Founder's Fee	\$59,000	\$2,727	\$3,160

The Founder's Fee includes priority access to the full continuum of care at Luther Manor.

Amenities

Included with monthly fees are:

- \$230 dining credit per resident
- All utilities including basic cable (excludes phone)
- Wide range of Life Enrichment activities
- Outdoor parking

Indoor parking is available for an additional fee.

*For apartments with a fountain view, add 10%. For apartments with golf course view, gazebo view, or proximity to dining, add 5%.

Notes:
